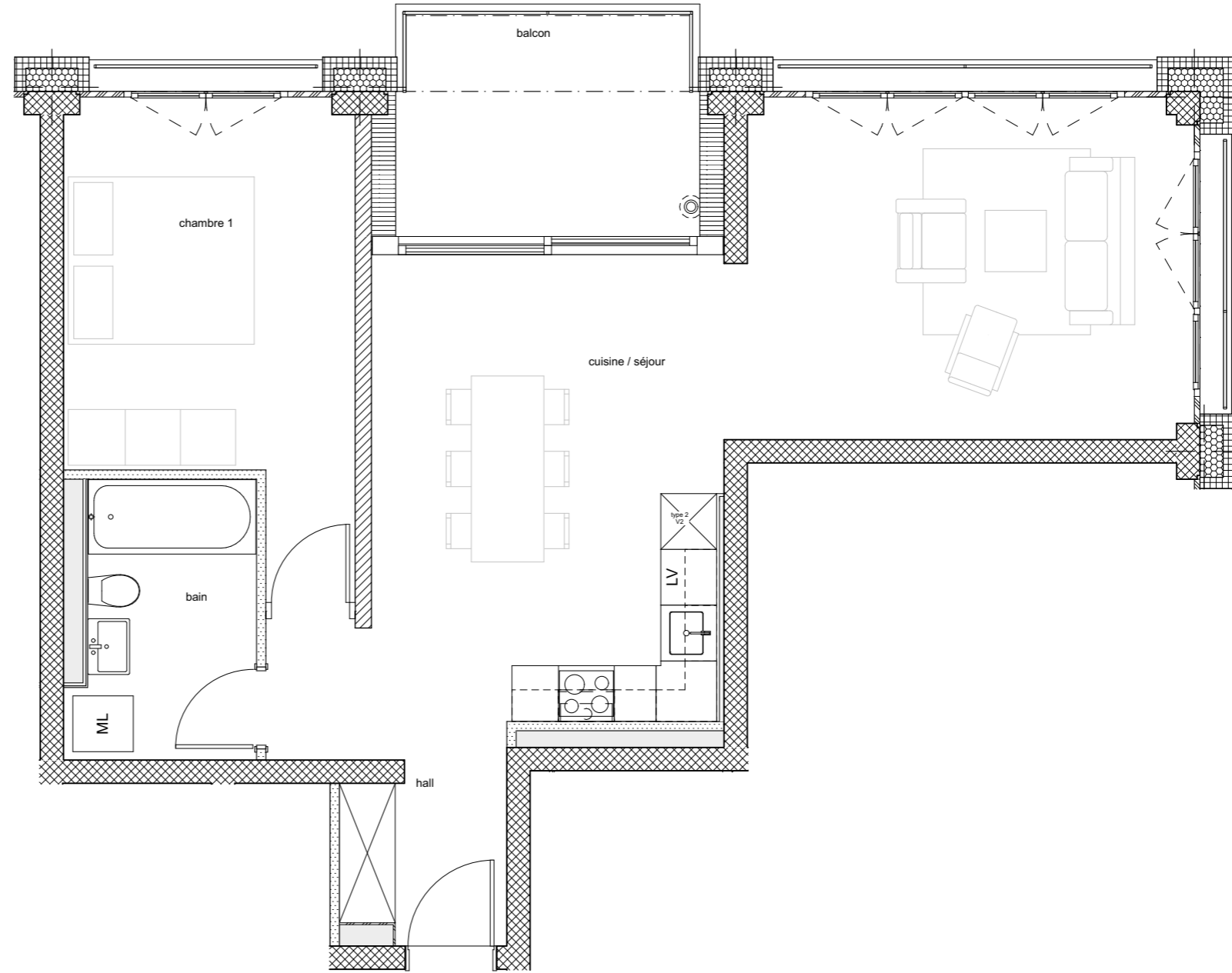


Appartement B.5.2 2.5P

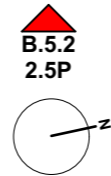
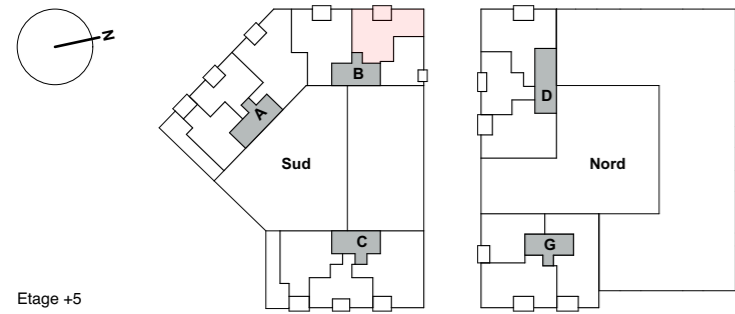
Hall	6.69 m ²
Cuisine/séjour	35.99 m ²
Chambre 1	13.86 m ²
Bain	5.68 m ²

Total	62.22 m²
Balcon	7.72 m ²

Surface de vente nette 67.12 m²



Mobilier illustratif, non fourni



598 - L'Esplanade

Plan : B.5.2
Date : 08.03.2019
Modifications : 16.08.2019
Format : A3 / sans échelle

