

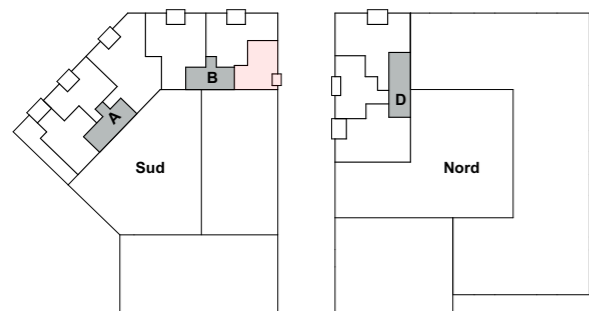
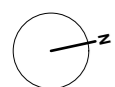
Appartement B.6.3 2.5P

Hall	4.24 m ²
Cuisine/séjour	24.95 m ²
Chambre 1	14.64 m ²
Bain	5.67 m ²

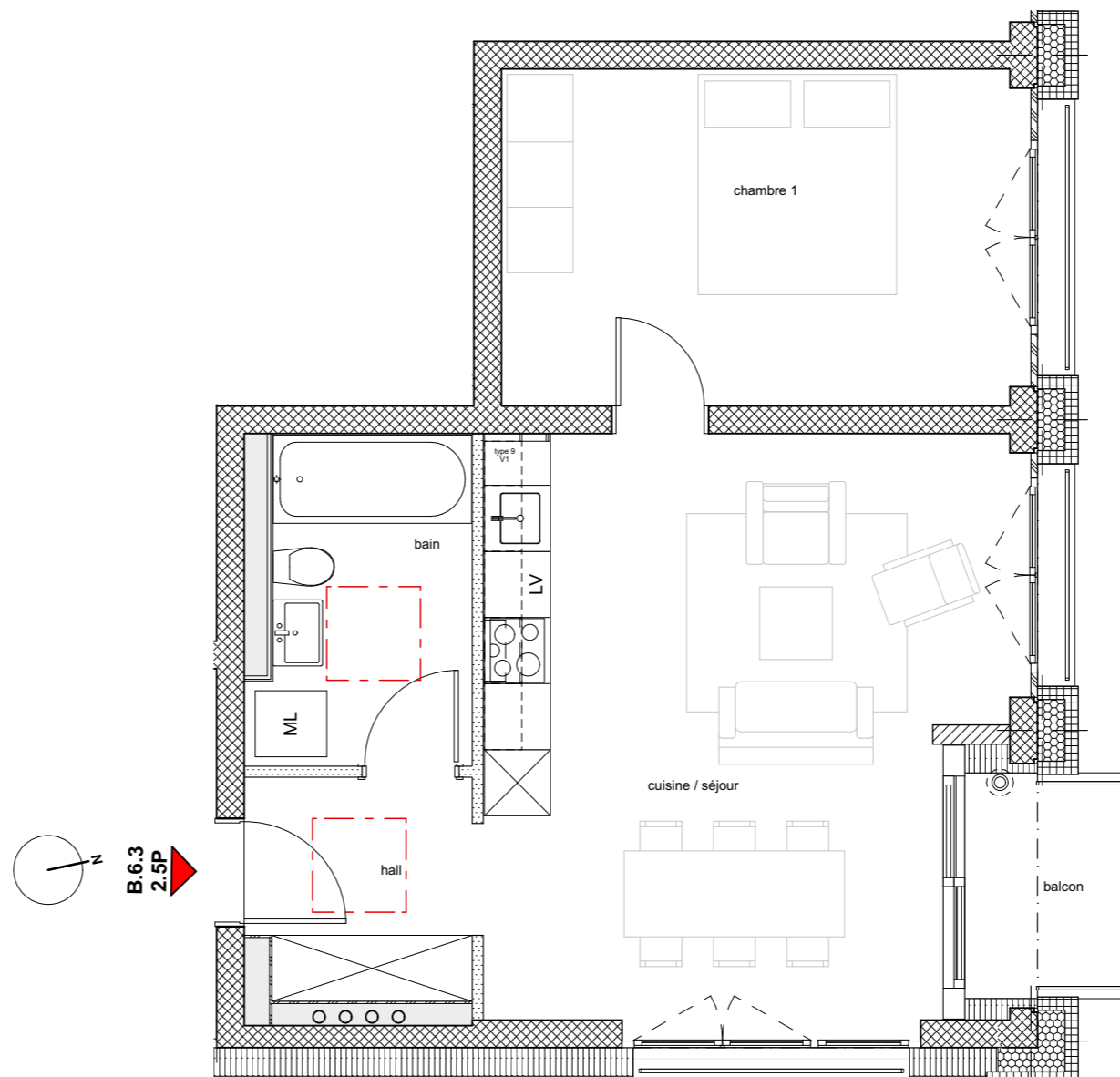
Total	49.50 m²
Balcon	2.95 m ²

Surface de vente nette 51.73 m²

Mobilier illustratif, non fourni



Etage +6



598 - L'Esplanade

Plan : B.6.3
Date : 08.03.2019
Modifications : 16.08.2019
Format : A3 / sans échelle

