

PROJET PPE RESIDENCE DES FONTAINES

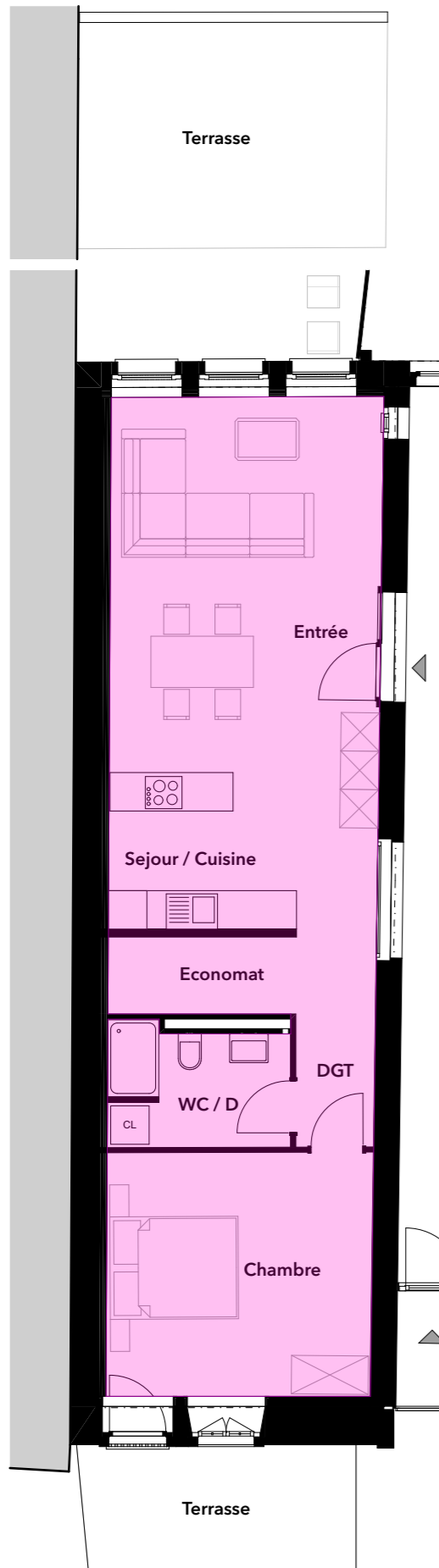
A 1316 CHEVILLY (VD)

Pour Immoeman Sàrl
Route cantonal 27
1025 Saint-Sulpice (VD)

PROJECO CONSTRUCTIONS SA IMPASSE DES TERREAUX 16 1632 RIAZ TEL: 026/916 14 14 FAX: 026/916 14 15

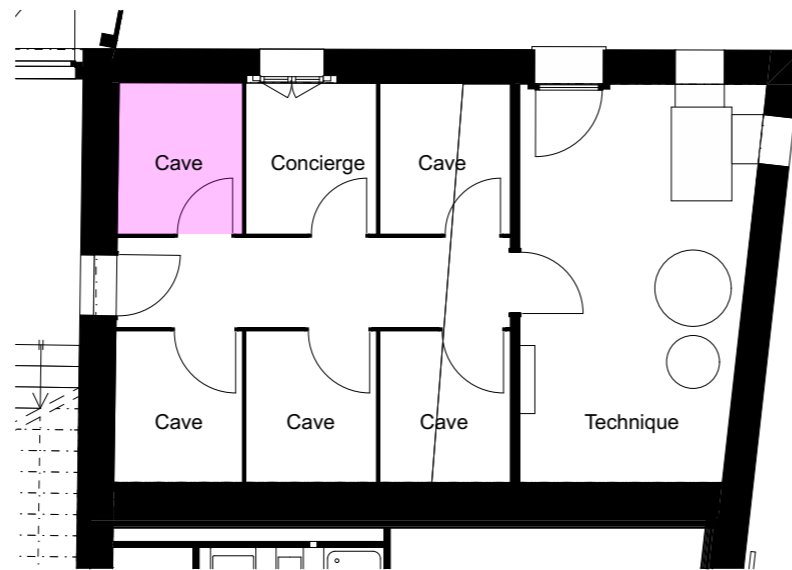


info@projeco.ch www.projeco.ch



LOT 1:
Surface brut habitable: 75.45m²
Terrasse: 23.85 / 2 = 11.92 m²
Surface de de vente: 87.37 m²

Jardin privatif: 60.90 m²



LOT 1 1:100, 1:200

Riaz, le 28.02.22

© Copyright Projeco Constructions SA 2018

v1 / MR