

# PROJET PPE RESIDENCE DES FONTAINES

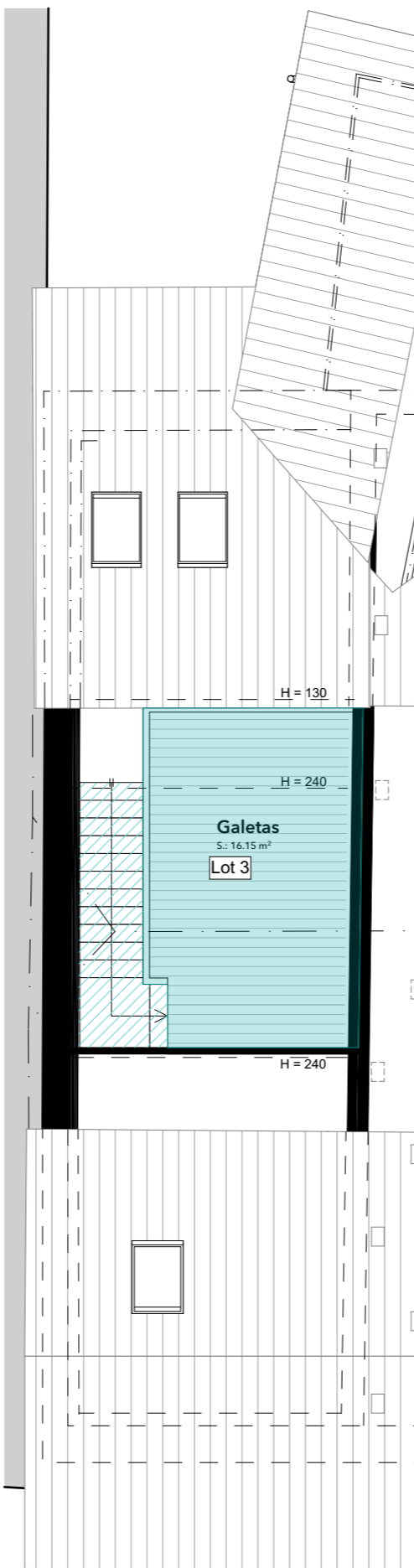
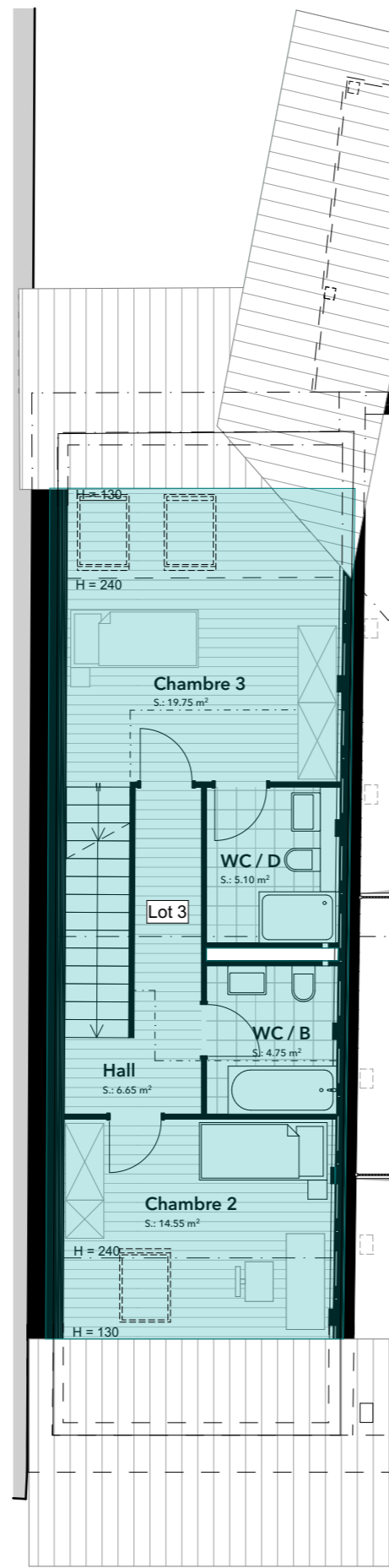
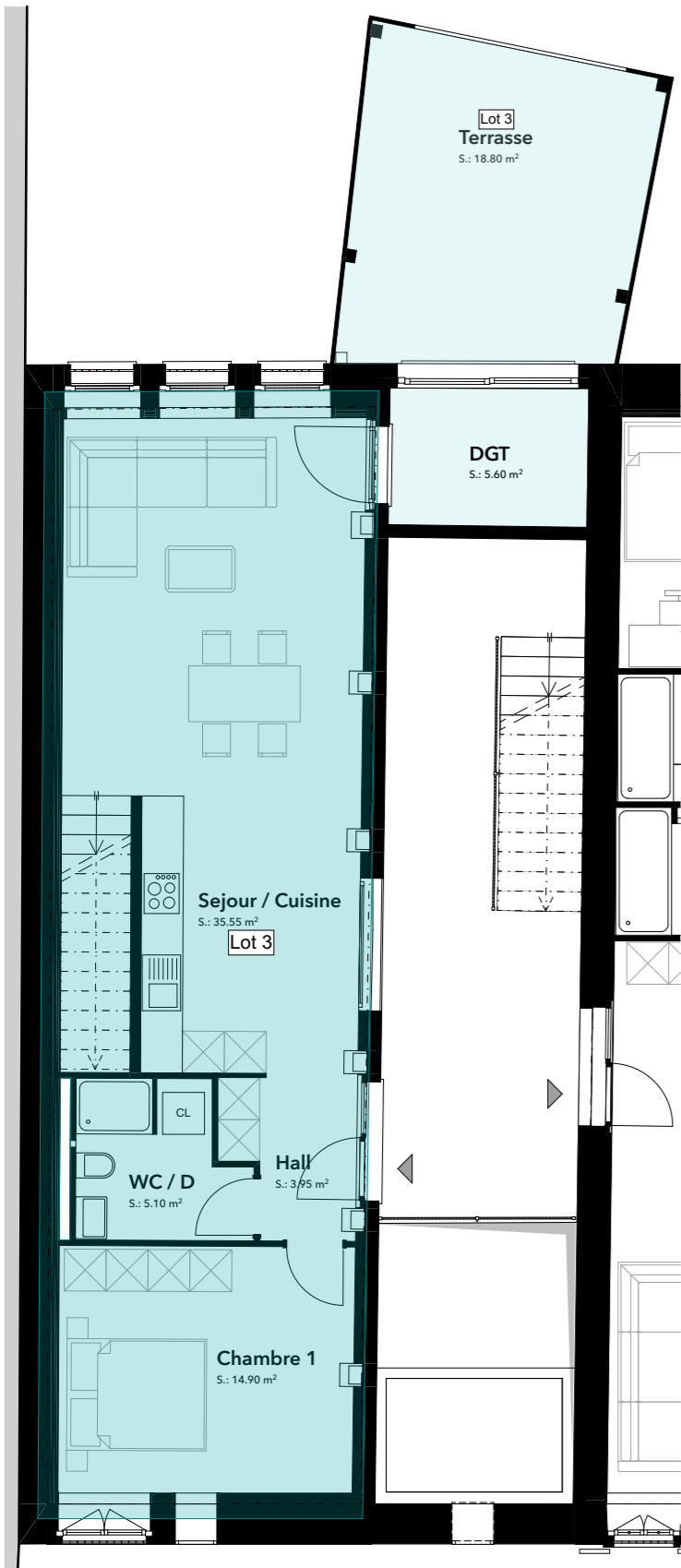
A 1316 CHEVILLY (VD)

Pour Immoeman Sàrl  
Route cantonal 27  
1025 Saint-Sulpice (VD)

PROJECO CONSTRUCTIONS SA IMPASSE DES TERREAUX 16 1632 RIAZ TEL: 026/916 14 14 FAX: 026/916 14 15



info@projeco.ch www.projeco.ch



**LOT 3:**  
**Surface brut habitable: 138.50m<sup>2</sup>**  
**Balcon: 24.50 / 2 = 12.25 m<sup>2</sup>**  
**Galetas: 18.50 / 3 = 6.16 m<sup>2</sup>**  
**Surface de de vente: 156.92 m<sup>2</sup>**  
**Jardin privatif: 86 m<sup>2</sup>**



**LOT 3 1:100, 1:200**

Riaz, le 23.08.21

© Copyright Projeco Constructions SA 2018

v1 / MR