

PROJET PPE RESIDENCE DES FONTAINES

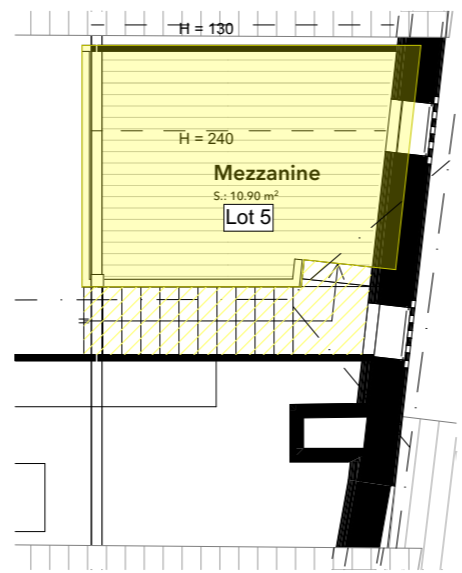
A 1316 CHEVILLY (VD)

Pour Immoeman Sàrl
Route cantonal 27
1025 Saint-Sulpice (VD)

PROJECO CONSTRUCTIONS SA IMPASSE DES TERREAUX 16 1632 RIAZ TEL: 026/916 14 14 FAX: 026/916 14 15

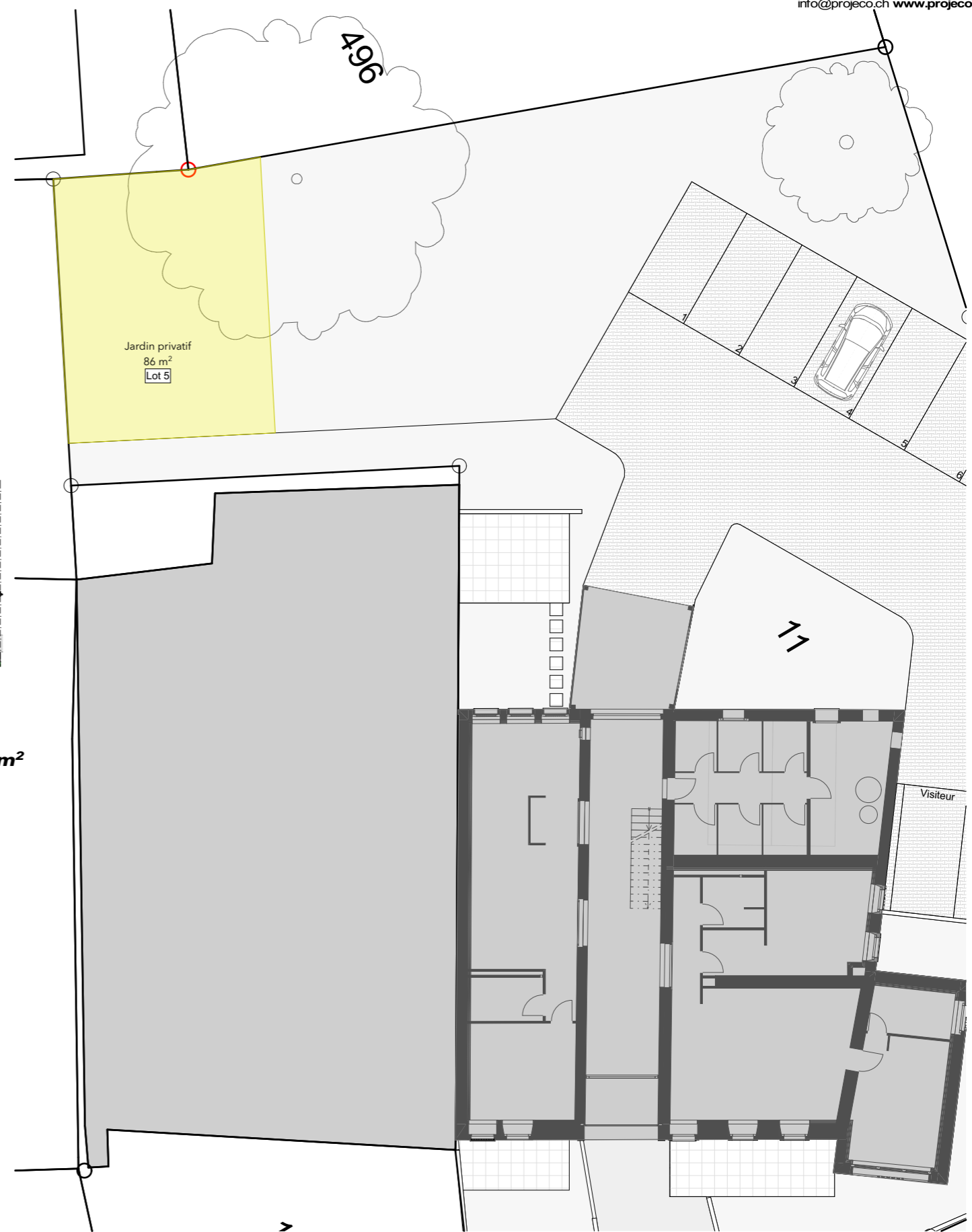
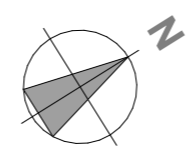


info@projeco.ch www.projeco.ch



LOT 5:
Surface brut habitable: 107.50m²
Balcon: -
Mezzanine 14.40 / 2 = 6.70m²
Surface de de vente: 114.20 m²

Jardin privatif: 86 m²



LOT 5 1:100, 1:200